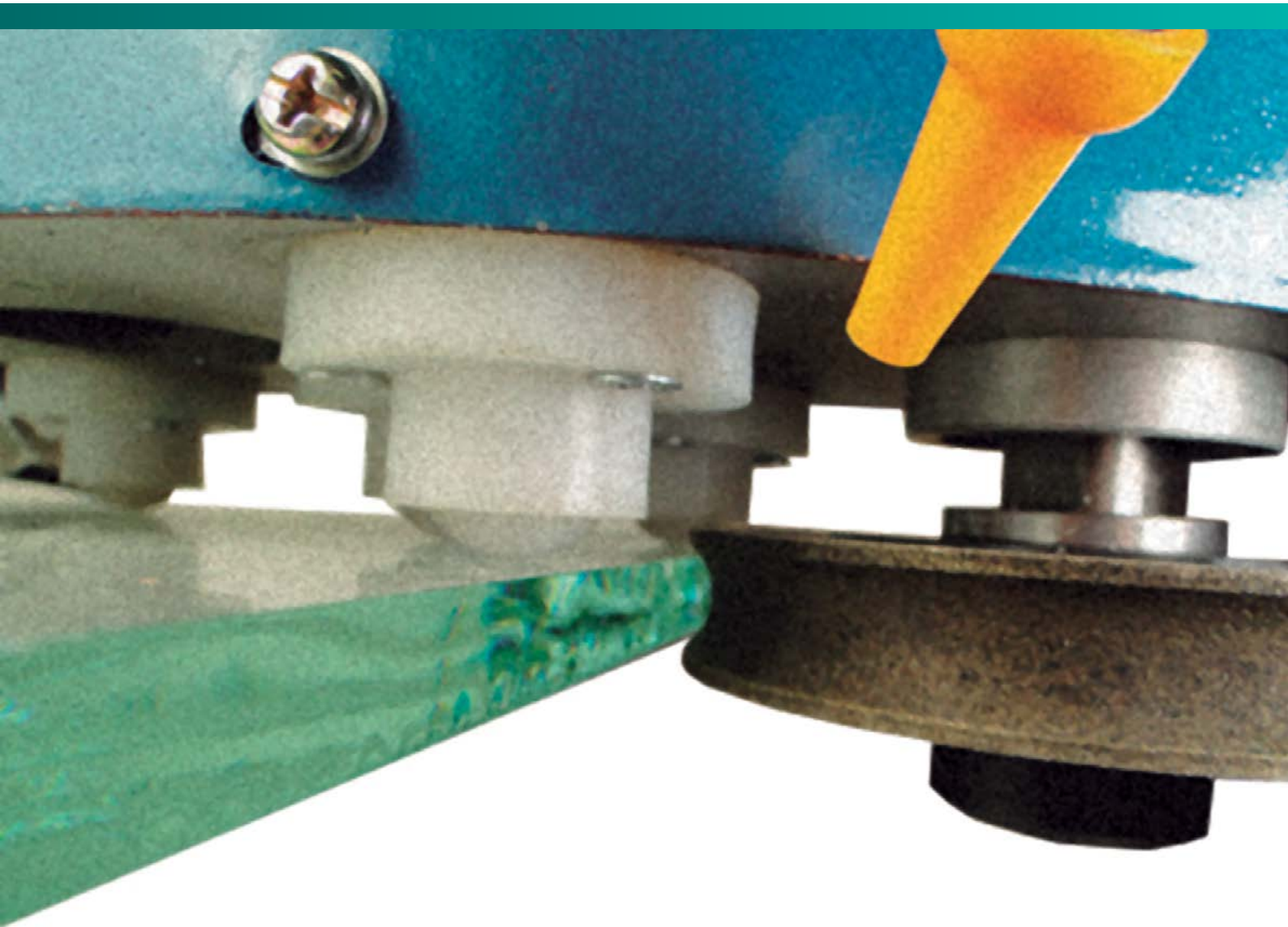
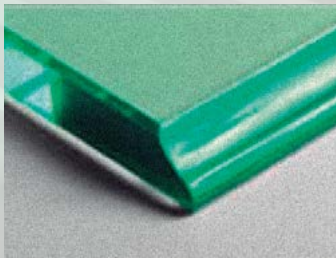


Diamond Tools for the Glass Industry

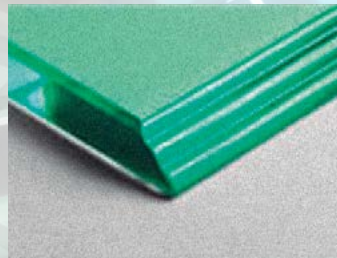


Diamond wheels-drills-counter sinks for the Glass Industry

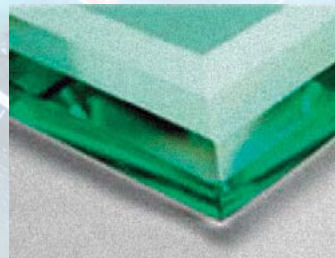
For many years Technodiamant is a leading manufacturer of diamond and CBN wheels and tools in The Netherlands. Many industries, including metalworking, electronic, plastic, ceramic and particularly the glass industry use Technodiamant products.



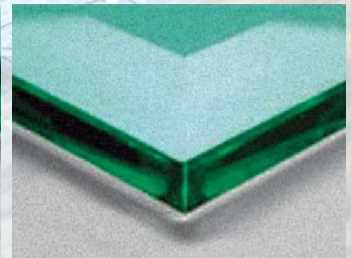
OG



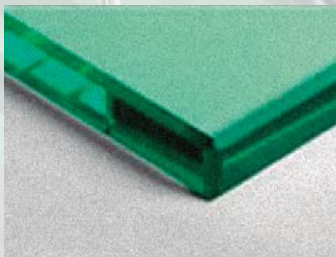
Triple OG



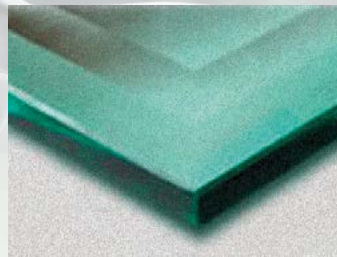
Triple Bevel



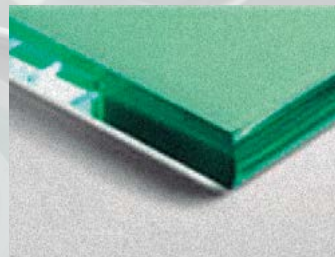
Bevel 1/4"



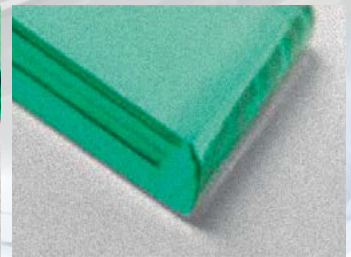
Flat Edge



Double Bevel



Pencil Edge



Convex

Wheels-drills-countersinks

We produce metal bond diamond wheels (including shallow to full hemispherical profiles), drills and counter sinks for the glass industry. These are used for the manufacture of automotive glass, mirrors, flat-glass and architectural glass products. These tools are also used for other crystalline materials such as piezo ceramics

and sapphire. Custom diamond wheels and drills can be provided according to customer requirements including profiles in almost every requested shape.

Our products are suitable for all leading machine brands including Bando, Intermac, Bystronic, Bottero, Bavelloni and Benteler.

We offer a re-profiling service (also for non Technodiamant tools) using Electro Discharge Machining (EDM) process. The key benefits of this method:

- Longer Wheel Life
- Faster line Start-Up
- Improved Edge Quality
- Higher Yields



One of the outstanding advantages of Technodiamant glass drills and counter sinks is the stainless steel body with a Belgian, Habit or straight mandrel connection.

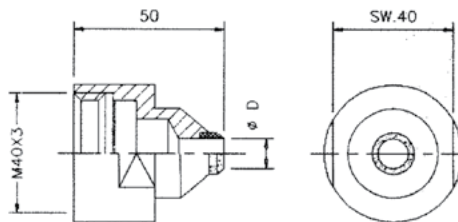
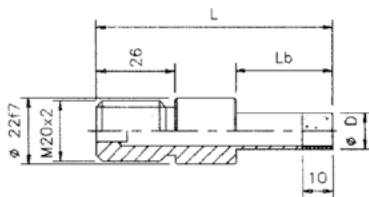
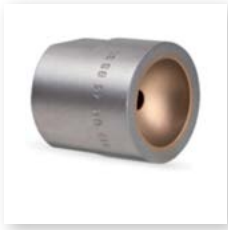
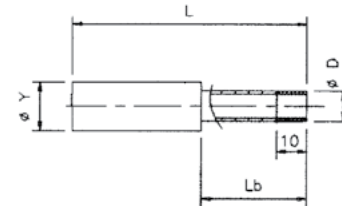
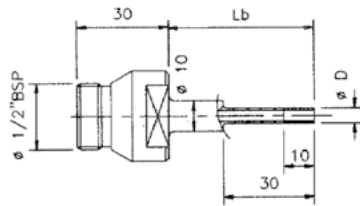
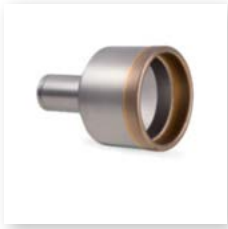
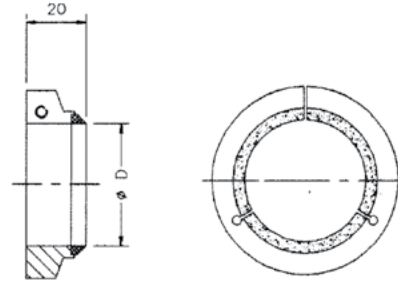
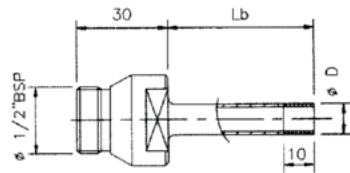
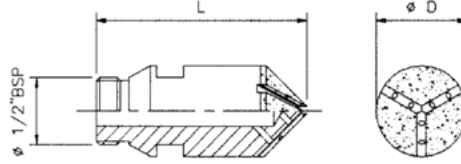
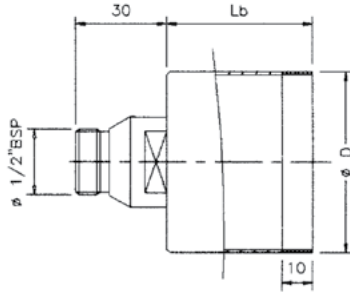
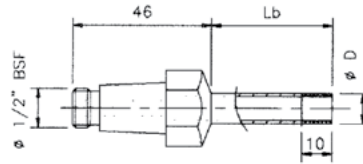
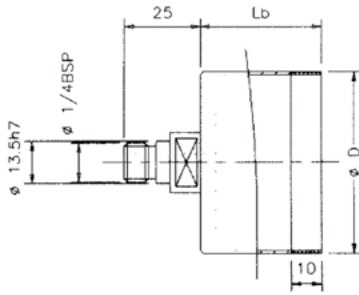
Other connections including adapters are available upon request.

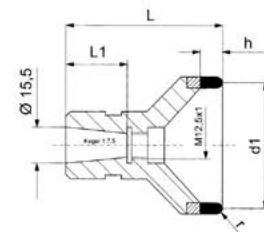
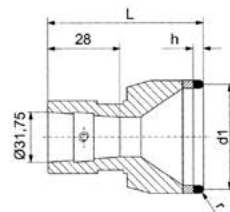
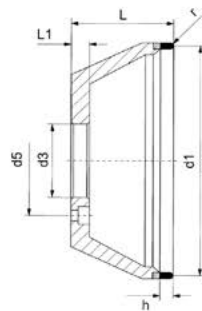
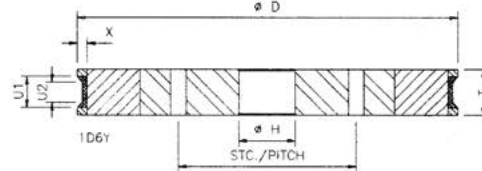
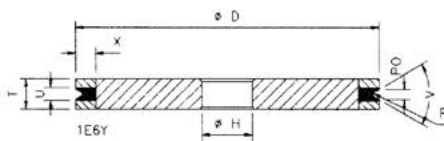
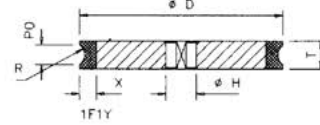
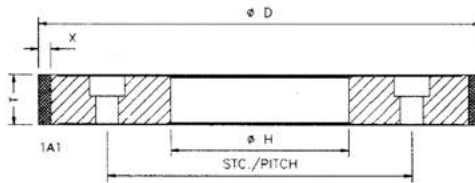
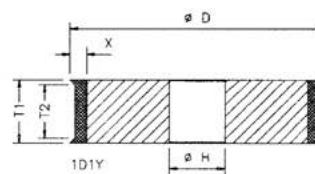
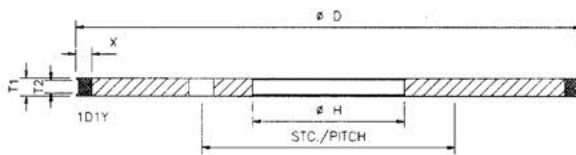
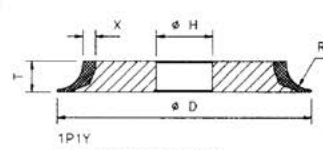
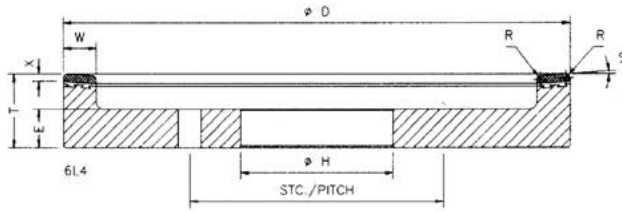
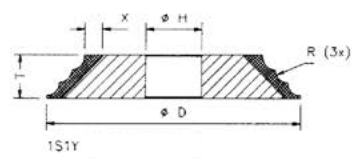
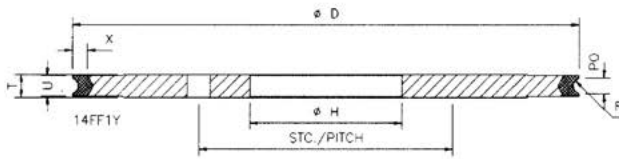
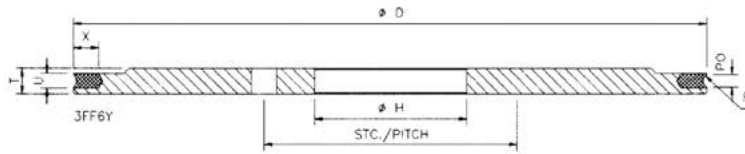
We recommend our monobloc design to overcome problems with furnace yield due to poor edge quality.

The drawings and photos show just a small variety of our product range.

Diamond powders with the highest quality and consistency are used in Technodiamant products. For special applications, it can be necessary to refine the diamond grit size or to change the concentration of the diamond powder. When ordering, it is of importance to mention the application which enables us to provide the optimum product.

Please contact Technodiamant for more information on standard products or custom designs.





Comparison table for grit systems

μm	DIN 848	FEPA-Standard	US-MESH	μm
1250	D 1100	D 1182		1190
1000	D 900	D 1001	16/18	1000
800	D 700	D 851	18/20	850
630	D 550	D 711	20/25	710
500	D 450	D 601	25/30	600
400	D 350	D 501	30/35	500
315	D 280	D 426	35/40	425
250	D 220	D 356	40/45	355
200	D 180	D301	45/50	300
160	D 140	D 251	50/60	250
125	D 110	D 213	60/70	212
100	D 90	D 181	70/80	180
80	D 65	D 151	80/100	150
63	D 55	D 126	100/120	125
50	D 45	D 107	120/140	106
40	D 35	D 91	140/170	90
32	D 25	D 76	170/200	75
25		D 64	200/230	63
		D 54	230/270	53
		D 46	270/325	45
		D 35	325/400	38
		D 30		32
		D 25	500/600	25
		D 15		20
		*		10

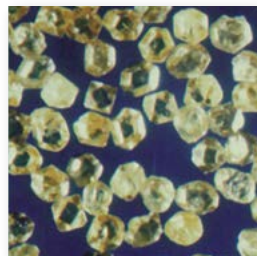
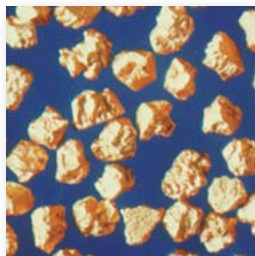
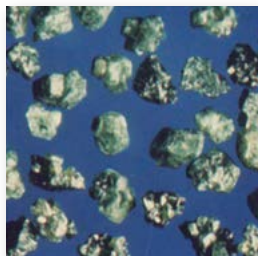
Technodiamant België BVBA

Atealaan 3
2270 Herenthout
Belgium
Tel.: +32 (0) 14 36 8828
Fax: +32 (0) 14 36 8838
info@technodiamant.be

Technodiamant USA Inc.

35A Kennedy Rd, Box 398
Tranquility, NJ 07879
USA
Tel.: +1 (908) 850-8505
Fax: +1 (908) 850-8506
info@technodiamant.com

www.technodiamant.com



*Wheels can also be supplied in gritsizes D3-D5-D7-D10